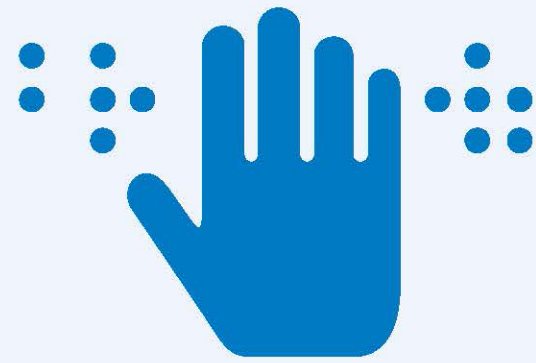


# Do we make ourselves clear?

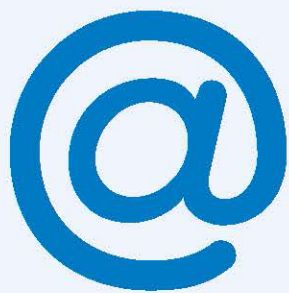
Do you have a disability, impairment or sensory loss & need to receive information in a way you can easily understand, for example:



**Large Print**



**Braille**



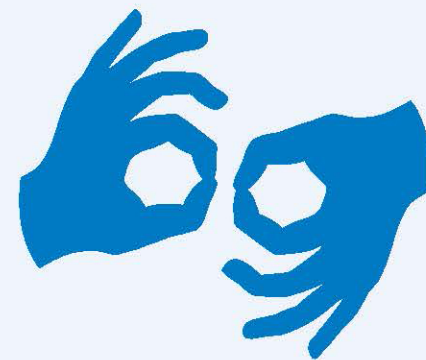
**Via Email**



**Hearing Impaired**



**Alternative Languages**



**Other Support**

if required, like British Sign Language (BSL)

**If YES, please inform us at reception so we can make sure you have access to information you understand**